

BERKELEY DESIGN ADVOCATES
BIENNIAL AWARDS FOR DESIGN EXCELLENCE

12th



BERKELEY DESIGN ADVOCATES
BIENNIAL AWARDS FOR DESIGN EXCELLENCE



FLAGG STUDIO
1208 SHATTUCK AVENUE



7

FLAGG STUDIO

Bernard Maybeck should be very happy. This renovation of his Isaac Flagg Studio of 1906 deftly replaced a series of nondescript additions at the back with a modern kitchen, pantry/laundry, and bathroom that vividly celebrate architectural history. Finding a cache of original redwood boards in the attic helped. But so did a strong desire to recycle whatever could be saved; for example, turning a no longer needed redwood door into an elegant bathroom counter.

The renovation removed the dropped ceiling over the old kitchen and exposed and framed the old exterior rear wall of the house, with refurbished eave and beam ends, as one of the new kitchen's major architectural features, along with the band of counter-height windows that form the distinctive backsplash. It's a classic Bay Region twist because bringing an exterior material inside – in this case redwood board and batten – was what Bay Region architects like Maybeck, Howard, and Wurster often did to dramatize a connection to the natural setting.

A widened opening between kitchen and dining room frames the latter space as a kind of stage, heightening the appeal of the brick chimney back, redwood walls, and exposed rafters. The rich color palette, use of natural materials like soapstone for the counter, and superlative craftsmanship that even included custom copper light fixtures, all evoke an organic Maybeckean sensibility that's also very contemporary in its functionality and precision. The Flagg Studio is reborn.

Project Team:

Owners: Mark and Anne Jackson

Architects: Arkin Tilt Architects

Engineering Consultants: Verdant Structural Engineers

Builder / Contractor: Cerami Builders Inc.

2017 12th BIENNIAL DESIGN AWARDS

Greetings:

Welcome to Berkeley Design Advocates' 12th Biennial Design Awards. The 2016-17 Awards recognize those projects that were completed between January 2015 and December 2016. We use this opportunity to highlight the best in design in our city, both to recognize the best architectural efforts and also to encourage our colleagues to strive for excellence in their designs.

Two years ago we recognized nine great projects as the region emerged from a brutal recession. This year, in the midst of a tremendous increase in economic activity and wealth, we recognize seven special projects. These projects represent our evolution since the Great Recession – three university projects including the transformational changes at Sproul Plaza and the new culturally significant Art Museum/Film Archive, as well as residential and commercial projects throughout the city.

In a city that treasures historical preservation, we honor the repair of a disfigured residence into a renewed asset to the neighborhood. But we also celebrate new residential construction that provides denser, urban housing for our growing population.

At BDA, we are firmly convinced that just as some existing structures should be repaired, preserved and renovated, we also believe that new construction – even projects that somewhat change the “look and feel” of a neighborhood – are not only necessary but, when designed well, are community assets. These new projects inject renewed vitality onto streets and sidewalks, and offer not only shelter but economic opportunity for our newest residents.

As a community of design professionals, we are grateful that the sponsors of our seven recognized projects had the vision to move projects forward and make Berkeley a better and more beautiful community.

Thank you for your interest in Berkeley and in supporting the creativity and sensitivity of Berkeley's design community. We are pleased that you joined us tonight to honor these gems that enrich Berkeley and its residents.

Anthony Bruzzone, BDA President
BDA Steering Committee

BDA STEERING COMMITTEE

ANTHONY BRUZZONE - PRESIDENT

JACK APPELYARD

ALEX BERGTRAUN

JAY CLAIBORNE

RYAN CALL

PHILIP HENRY

ERICK MIKITEN

MARK RHOADES

MATT TAECKER

KATIE GLADSTEIN

DAVID SNIPPEN

2017 AWARDS JURY

JOHN KING

PHILIP HENRY

ANNE TORNEY

DAN GREGORY

EMILY MARTHINSEN

PROGRAM DESIGN

RYAN CALL



LOWER SPROUL REDEVELOPMENT, UC BERKELEY
UNIVERSITY OF CALIFORNIA BERKELEY



**6 UNIVERSITY OF CALIFORNIA, BERKELEY
LOWER SPROUL PLAZA REDEVELOPMENT**

The Lower Sproul Plaza Redevelopment project’s goal was to revitalize the East and South elements of the Plaza. This was accomplished by changes to Eshleman Hall and Martin Luther King Jr Student Union.

Eshleman Hall was replaced with a lower, six story building with a glass North wall (the South wall of the Plaza). This allows one to see into the building, reducing the visual impact of a six story building.

The Martin Luther King Jr Student Union is a six story building forming the East wall of the Plaza. Additions have been constructed on its West wall (East wall of the Plaza) and South wall (facing Bancroft Way). These additions vary in depth. They have glass facades and textured elements of concrete walls and metal railing systems. As these two and three story additions wrap around the South-West corner of the student union (the South-East Plaza entry) they decrease the mass of the entry from Bancroft Way, making it more inviting.

The Plaza deck has been resurfaced with a non-continuous grid pattern of different colored and textured concrete, making the Plaza less formal and visually smaller in scale.

These improvements have indeed been successful in revitalizing the East and South elements of Lower Sproul Plaza. The design creates strong new visual and physical links to Sproul Plaza, Bancroft Way, and the path along Strawberry Creek. It also makes the front of Zellerbach Hall more of a theatrical stage in its own right. In effect, Lower Sproul Plaza has finally become the vibrant hub and urbane connector it was always meant to be.

Project Team:
 Owners: University of California
 Architect: Moore Ruble Yudell Architects & Planners
 Structural Engineering: Rutherford + Chekene
 Landscape Architect: CMG
 Builder / Contractor: McCarthy Builders



PROJECT LOCATION MAP



1. MIXED-USE URBAN INFILL
1912 SHATTUCK AVENUE
2. AQUATIC 1
800 UNIVERSITY AVENUE
3. SAUL’S PARKLET
1475 SHATTUCK AVENUE
4. UNIVERSITY OF CALIFORNIA BERKELEY BAM/PFA
2155 CENTER STREET
5. UNIVERSITY OF CALIFORNIA BERKELEY JACOBS HALL
2530 RIDGE ROAD
6. UNIVERSITY OF CALIFORNIA BERKELEY LOWER SPROUL REDEVELOPMENT
NORTHSIDE OF BANCROFT WAY
7. FLAGG STUDIO
1208 SHATTUCK AVENUE



1

1912 SHATTUCK AVENUE

Richard Fernau is a longtime UC-Berkeley architecture professor, so it makes sense that this mixed-use building teaches a lesson: his design exposes a seismic system where the six structural columns rise from a concrete pad floor and at the height of 10 feet widen to hold movable discs that allow the two upper floors to slide back and forth as much as 24 inches during a major earthquake. In other words, a base isolation system that's on full view to anyone walking by or sitting within the ground-floor brewpub.

Even without this unusual show-and-tell, 1912 Shattuck would stand out. It's the sequel to its neighbor to the north, which Fernau designed in the early 1990s for structural engineer Steven Tipping (who's also the client here). While each is designed with an eye to sustainability and with a determination to offer a lively sidewalk presence, the newcomer has a welcome materiality. The offices floors above are clad in standing-seam copper; the brewpub fills a concrete base with a garage-door-like front window that can roll back in nice weather. Tactile and textured, this is what all urban infill should aspire to: simple in form, sophisticated in execution and built to last.

Project Team:
Owner: Steven Tipping
Architect: Fernau & Hartman Architects, Inc.
Structural Engineer: Tipping Structural Engineers
Landscape Architect: Calandra Design
General Contractor: Oliver & Company





5

**UNIVERSITY OF CALIFORNIA, BERKELEY
JACOBS HALL**

Sharing a block with large footprint academic buildings and across the street from residential ones, Jacobs Hall knits together an eclectic context at the campus edge by remaining completely true to its own architecture.

Where Soda Hall feels like a box with wrapping paper, Jacob's design is a direct expression of the volumes within. A restrained palette of aluminum windows and silvery cladding accentuates the volumetric discipline. Likewise, each of its four external faces is a direct expression of environmental control, beautifully composed: horizontal shades and light shelves on the south, large openings on the north, vertical fins to manage the eastern and western sun, and solar panels on the roof. The purity of form speaks to the institutional context while the intricacy of the facades and the sloped rooftop p.v. array seems to gesture to the residential scale and pitched roofs adjacent. The solar court opening off the main "maker spaces" on the south side demonstrates that an urban space doesn't have to be expansive to be successful.

The excellent craftsmanship throughout, visible down to the playfully flared flashing on the north basement windowsills, does justice to the excellence of the design.

Programmatically a home for creativity and innovation, Jacobs Hall demonstrates that future of building performance can be both rigorous and delightful.

Project Team:

- Owner: University of California, Berkeley
- Architect: Leddy Maytum Stacy Architects
- Engineering Consultants: Forell Elsesser Engineers Inc.
- Landscape Architect: Cliff Lowe Associates
- Contractor: Hathaway Dinwiddie Construction Company



MIXED-USE URBAN INFILL
1912 SHATTUCK AVENUE



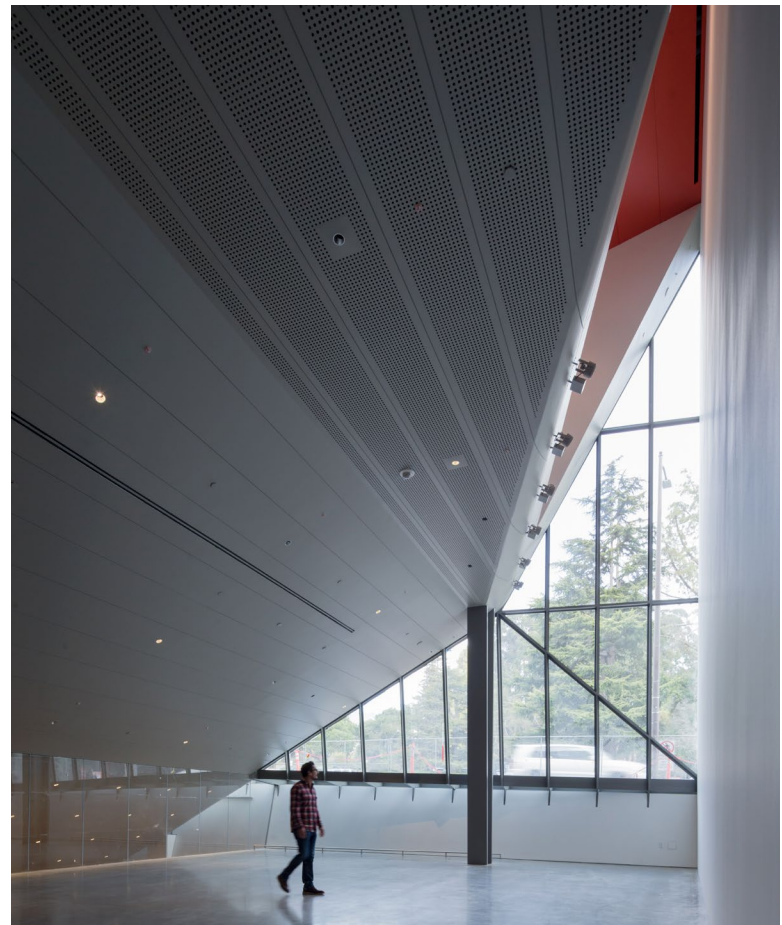
2

THE AQUATIC I

Amid all the Berkeley infill housing projects that wrap four- or five-story batches of apartments in thin-skinned architectural looks, the Aquatic comes as a no-nonsense relief. Strong in both color and form, it adds a systematic depth to the standard line of projecting bays, with materials that are simple but integral. The one exception is the recessed bay between a storefront and the lobby that is clad in woody resin panels and punctured with porthole-like windows, a single emphatic accent that also serves as a visual spine to the larger mass.

This is the first of three phases that eventually will line University between Fourth and Sixth streets with 258 apartments in six buildings, none higher than five stories and with extensive retail space along Fourth. There's a danger that the flat-roofed process might prove daunting -- but if the Aquatic's launch is any indication, the result will be density with distinction.

Project Team:
Owner: R&S Fifth Street, LLC
Architect: Trachtenberg Architects
Structural Engineer: Santos & Urrutia
Landscape Architect: The Miller Company
Civil Engineer: Lea&Braze
Contractor: West Builders





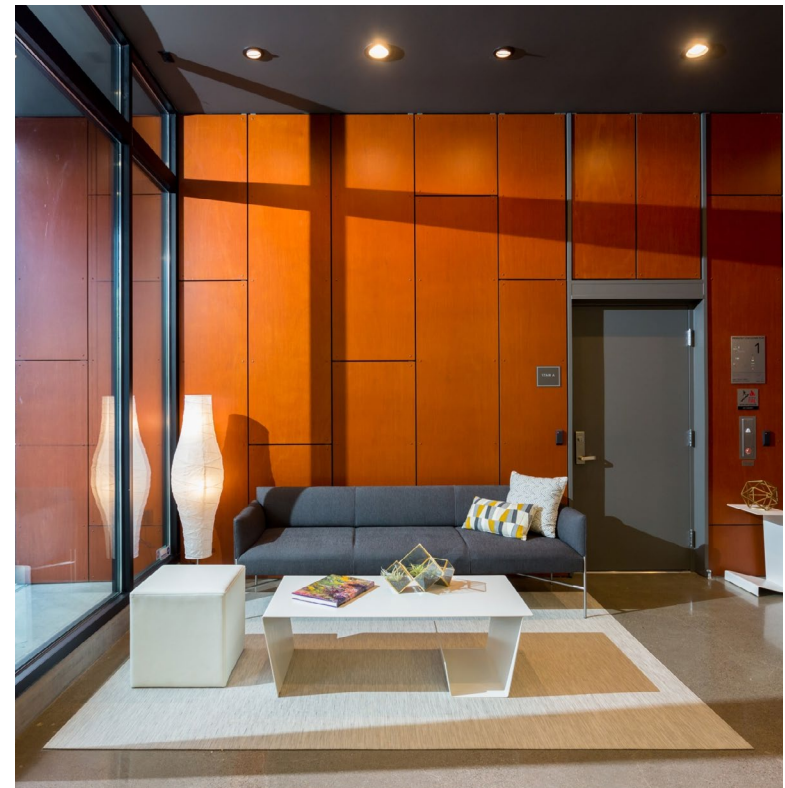
4

**UNIVERSITY OF CALIFORNIA, BERKELEY
BAM/PFA**

This is the first Berkeley building in decades to receive wide attention in the architectural world, thanks in part to a Diller Scofidio + Renfro design concept that drapes slides a steel-clad addition behind and across a streamline moderne UC printing plant from 1939. The firm likens the addition to a “sensuous cipher,” though others might see an abstract metallic gourd. There’s also a video screen facing Addison Street, though it rarely displays anything except the institution’s coming attractions.

More important than the rhetorical flourishes is the actual building: downtown Berkeley has gained a truly well-crafted fusion of old and new where details as simple as the railings are worth a second look. The galleries have a welcome variety of scales and sensations, and the 232-seat theatre feels like a special destination. As for the main gallery, where the steel columns and scalloped sky-lit roof of the old press floor were dismantled and then reassembled, it’s a charged space that doesn’t try to pretend it has been there all along. In the end, the value here isn’t style but substance, and that’s how it should be.

- Project Team:
- Owners: University of California, Berkeley
- Architect: Diller Scofidio + Renfro
- Executive Architect: EHDD
- Structural Engineer: Forell Elsesser Engineers Inc.
- MEP: Stantec
- Landscape Architect: Hargreaves Associates
- Lighting Consultant: Tillotson Design Associates
- Telecommunications: TEECOM
- AV and Theater Design: Fisher Dachs Associates
- Acoustical consultant: Jaffe Holden Acoustics
- Waterproofing and Facade Consultant: SGH
- Builder & Contractor: Plant Construction Company





3

SAUL'S DELI PARKLET

This parklet enjoys a sunny location, enticing aromas from Saul's Deli, and a generous and dynamic trapezoidal site created by commandeering two angled parking spaces rather than the single parallel space allotted a typical parklet. Trachtenberg Architects take full advantage of these opportunities with friendly material choices and contemporary detailing. Raw steel planters make a suitably tough base that hang with the curves; horizontal lines of the wraparound wood bench emphasize the swoopy site geometry; orange chairs and pale yellow triangular awnings, uplit at night, sweeten the deal. The craftsmanship of all these elements, and the pavers underfoot rather than the decking common to other parklets, are satisfyingly solid. The strength and elegance of this entirely successful parklet greatly enhance the delights of urban people-watching on North Shattuck.

Project Team:
Client: Saul's Deli
Architect: Trachtenberg Architects
Landscape Architect: Garden Architecture
Custom Steel Fabrication: Luke Gosselin
Handpainted Signage: Goldenwest Sign Arts
Lighting Design: Anna Kondolf
General Contractor: Stevens Hemingway Stevens